

MIKE YANIRO

3 NOVEMBER - 15 DECEMBER 2013

O M S T

The features of a writer's face / The body as location. A surface. Her skin. Her inks. His "I imagine she imagines insects." The body as photograph the body in light the writing lost in light. The body by definition. The cutting that is the body as elision. The body as deletion.

-Steve McCaffery "Panopticon" 1984

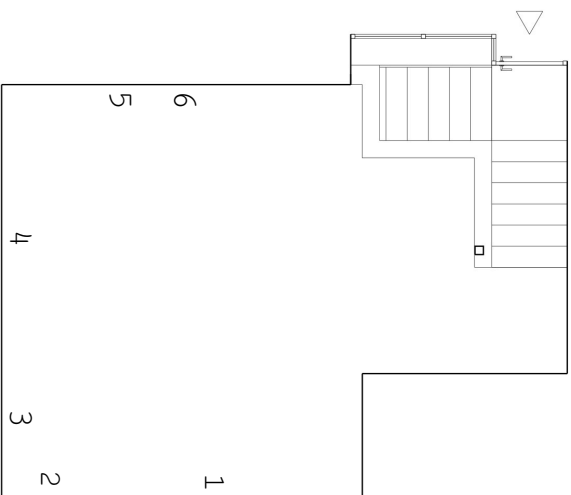
In his first solo exhibition, Mike Yaniro presents a new body of work that utilize materials from commercial signage, images culled from scientific textbooks and the artist's own image bank. He manually reproduces, sequences, and contextualizes text and image, suggesting and displacing narratives and representations by creating dysfunctional vehicles of information interwoven with corporeal imagery. These works are monuments to language and expression, slowed by the stillness requisite of the artistic process and represented in clinical isolation. Close examination reveals a meticulous and present hand, a record of a meditative act.

What these works recall are those heightened moments of consciousness when we are able to slow down enough to observe the previously overlooked: the proximity of our eyes to our nose, the callous of our palms, and the unnatural, yet familiar, color of sign panels telling us where to go or where not go. Therein we find ourselves confronting the materiality of language; our perception decelerates enough to dissect its inner parts, without losing the ability to make associations. -JJ Manford

Mike Yaniro (b. 1980) recently received his MFA from Hunter College. His work has previously been exhibited at Eli Ping and Envoy Enterprises.

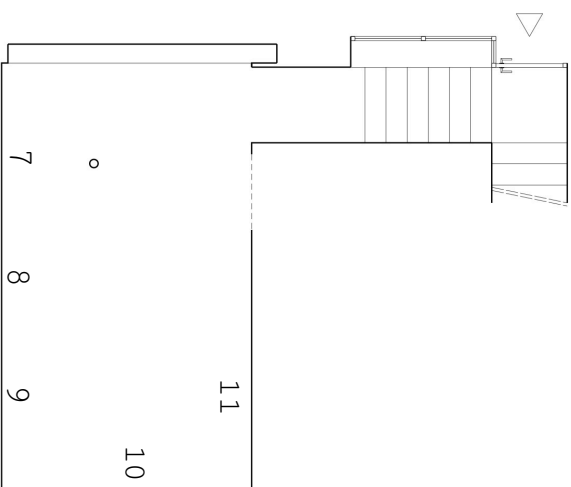
ROOM EAST
41 Orchard Street
New York, NY 10002

info@roomeast.com
+1 212 226 7108
roomeast.com



Upstairs:

- (1) Untitled 2012
acrylic on colored expanded PVC
30 x 94.5 inches
MY 13.05
- (2) Caric_1 2013
graphite and ink on paper, found frame
21 x 18 inches
MY 13.01
- (3) Caric_2 2013
graphite and ink on paper, found frame
24 x 28 inches
MY 13.06
- (4) Untitled 2013
acrylic on colored expanded PVC
30 x 94.5 inches
MY 13.07
- (5) Rickling_1 2013
India ink on latex rubber, found frame
41 x 28.5 inches
MY 13.08
- (6) Rickling_2 2013
India ink on latex rubber, found frame
41 x 28.5 inches
MY 13.09



Downstairs:

- (7) Untitled 2013
Xerox toner on latex rubber sheeting
57 x 42 inches
MY 13.10
- (8) Untitled 2013
Xerox toner on latex rubber sheeting
57 x 42 inches
MY 13.11
- (9) Untitled 2013
Xerox toner on latex rubber sheeting
57 x 42 inches
MY 13.12
- (10) Untitled 2013
Xerox toner on latex rubber sheeting
57 x 42 inches
MY 13.13
- (11) Untitled 2013
acrylic on colored expanded PVC
24 x 32 inches
MY 13.14