

# R O E A

... BUT THE CLOUDS ...

13 JANUARY - 3 MARCH 2013

# O M S T

“When I thought of her it was always night.”

Room East is delighted to open its second year with ... BUT THE CLOUDS ..., a winter group exhibition, which takes as its starting point a television play of the same title that Samuel Beckett wrote for the BBC. The exhibition presents a diverse array of media including film, video, painting, drawing, photography and sculpture. An opening reception will take place on Sunday 13 January from 6-8pm at 41 Orchard Street.

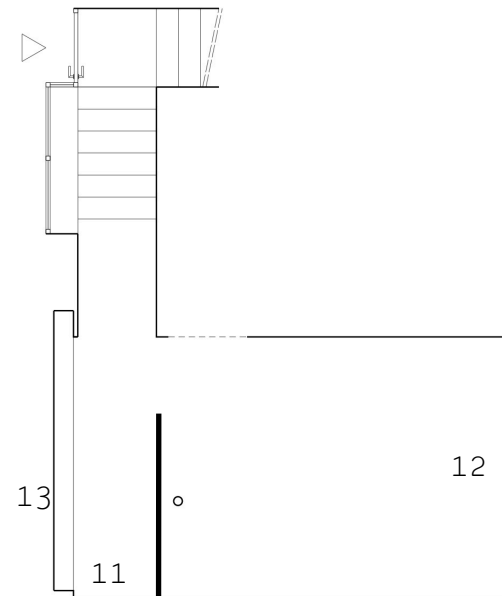
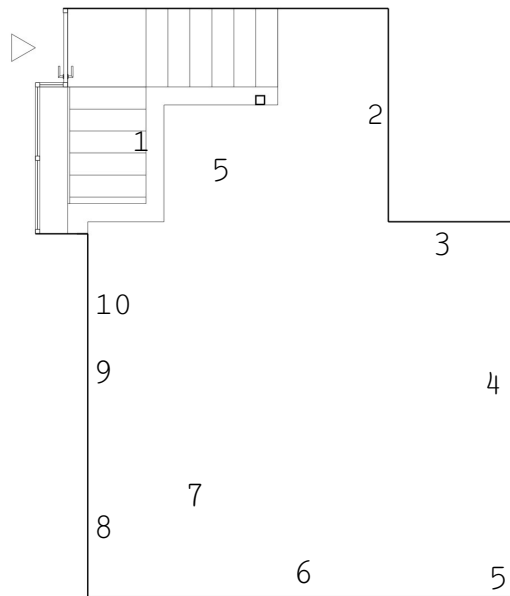
Beckett's "...but the clouds..." (1977) throws into stark relief many of the major themes of his life's work such as the debilitating effects of age and the futility of memory. The play has two characters. A man recalls his encounters with a woman, who throughout the short script is little more than an apparition that appears for a moment before the lights dissolve her image. The last lines of Beckett's play are appropriated from the last lines of the Yeats poem "The Tower" (1928): "... but the clouds of the sky ... when the horizon fades ... or a bird's sleepy cry ... among the deepening shades..."

The script of "...but the clouds..." is as concerned with stage direction as it is with speech. What makes this play, and the handful of others that Beckett wrote for television, unique is that they are haunting visual experiments. In addition to the unmistakable mood conjured up by Beckett's scene painting, the immediacy with which he depicts human frailty remains fascinating. From Jasper Johns to Bruce Nauman there is a longstanding relationship between Beckett and contemporary art, and the present exhibition aims to continue that tradition.

MARIA ANTELMAN / MATTHEW BOOTH / N. DASH / ARA DYMOND / AMY  
GRANAT / SHAWN KURUNERU / TONY LEWIS / MAAIKE SCHOOREL /  
DAVINA SEMO

ROOM EAST  
41 Orchard Street  
New York, NY 10002

info@roomeast.com  
+1 212 226 7108  
roomeast.com



Upstairs:

(1) DAVINA SEMO  
BUT SOMETIMES YOU CAN'T GET AROUND BEING LONESOME FOR A WHILE  
2012  
painted black chain  
28 x 4 3/4 inches

(2) SHAWN KURUNERU  
Virgin (Constellation III) 2013  
ink on board  
20 x 16 inches

(3) DAVINA SEMO  
THE FIRST TIME I HAD MY HEART BROKEN I THOUGHT IT WAS THE END OF THE WORLD 2012  
etched one-way mirror, enamel paint  
36 x 36 inches

(4) N. DASH  
To Be Titled 2012  
adobe, jute, twine, wood support  
33 x 27 inches

(5) AMY GRANAT  
Scratch (...but the clouds...) 2003-2013  
16mm film, projector, bass amplifier, motion sensor, wall paint  
dimensions variable

(6) TONY LEWIS  
role 2012  
pencil, graphite powder and tape on paper  
84 x 60 inches

(7) ARA DYMOND  
The Letter L 2012  
MDF, stain, aqua resin, paper towels, cotton, mold release, wood remnants  
63 x 12 x 12 inches

(8) ARA DYMOND  
Memories, Landscapes and Other Lies ... 2010-12  
MDF, paint, steel wool rubbing  
48 x 33 x 3/4 inches

(9) MATTHEW BOOTH  
The Big Toe 2010  
archival pigment print  
32 x 42 5/8 inches

(10) MATTHEW BOOTH  
Diatomaceous earth 2010  
archival pigment print  
24 3/4 x 32 inches

Downstairs:

(11) MAAIKE SCHOOREL  
Vanitas 2012-13  
oil on canvas  
16 x 34 inches

(12) MARIA ANTELMAN  
The Amateurs 2012  
HD video, 8 minutes  
dimensions variable

Window:

(13) MATTHEW BOOTH  
August 8, 2009 2011  
offset print  
18 x 24 inches



DAVINA SEMO  
BUT SOMETIMES YOU CAN'T GET AROUND BEING LONESOME FOR A WHILE  
2012  
painted black chain  
28 x 4 3/4 inches

ROOM EAST  
41 Orchard Street  
New York, NY 10002

[info@roomeast.com](mailto:info@roomeast.com)  
+1 212 226 7108  
[roomeast.com](http://roomeast.com)



SHAWN KURUNERU  
Virgin (Constellation III) 2013  
ink on board  
20 x 16 inches

ROOM EAST  
41 Orchard Street  
New York, NY 10002

[info@roomeast.com](mailto:info@roomeast.com)  
+1 212 226 7108  
[roomeast.com](http://roomeast.com)



DAVINA SEMO  
THE FIRST TIME I HAD MY HEART BROKEN I THOUGHT IT WAS THE END  
OF THE WORLD 2012  
etched one-way mirror, enamel paint  
36 x 36 inches

ROOM EAST  
41 Orchard Street  
New York, NY 10002

info@roomeast.com  
+1 212 226 7108  
roomeast.com

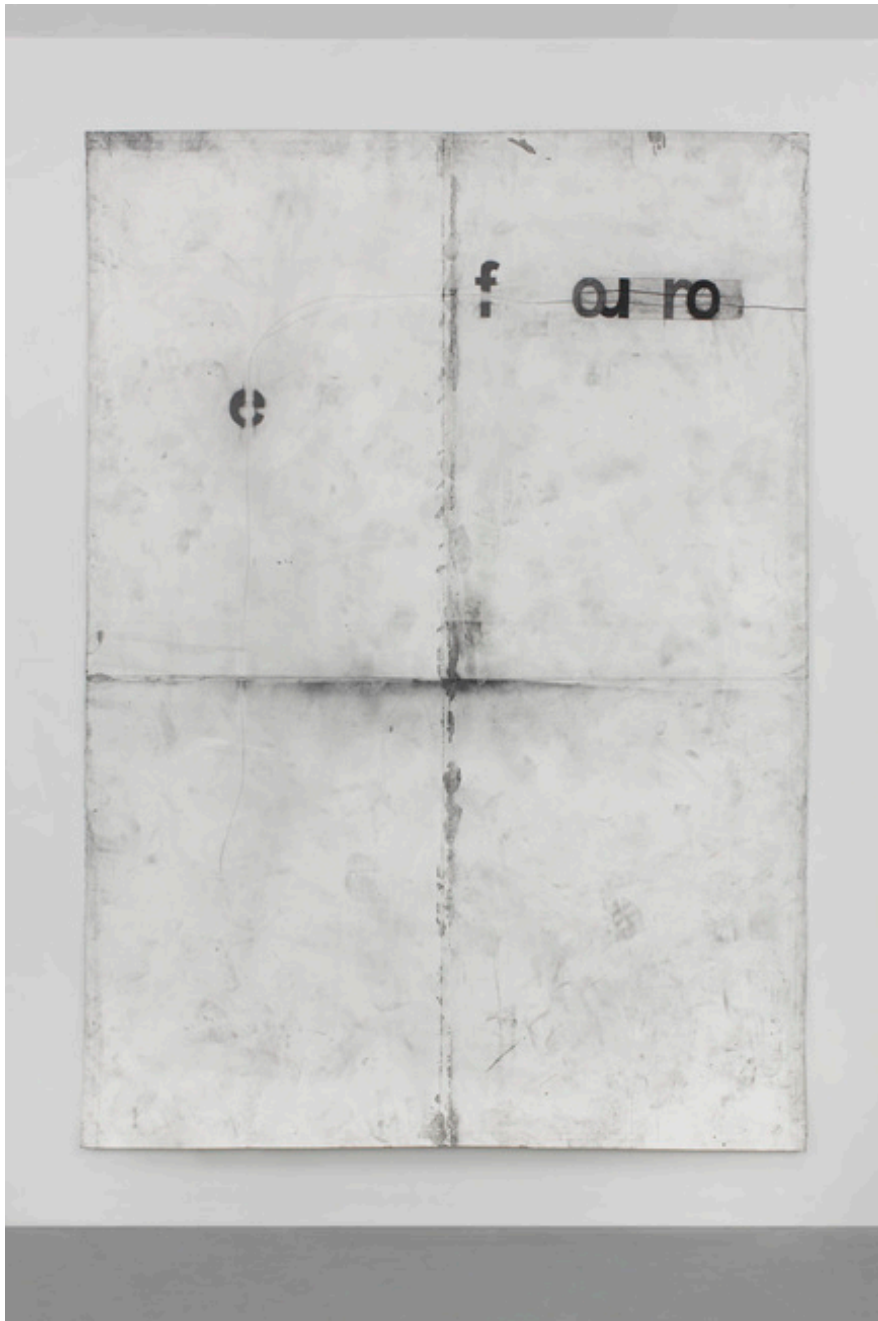




N. DASH  
To Be Titled 2012  
adobe, jute, twine, wood support  
33 x 27 inches

ROOM EAST  
41 Orchard Street  
New York, NY 10002

info@roomeast.com  
+1 212 226 7108  
roomeast.com



TONY LEWIS  
role 2012  
pencil, graphite powder and tape on paper  
84 x 60 inches

ROOM EAST  
41 Orchard Street  
New York, NY 10002

[info@roomeast.com](mailto:info@roomeast.com)  
+1 212 226 7108  
[roomeast.com](http://roomeast.com)



ARA DYMOND  
The Letter L 2012  
MDF, stain, aqua resin, paper towels, cotton, mold release,  
wood remnants  
63 x 12 x 12 inches

ROOM EAST  
41 Orchard Street  
New York, NY 10002

info@roomeast.com  
+1 212 226 7108  
roomeast.com





ARA DYMOND  
Memories, Landscapes and Other Lies ... 2010-12  
MDF, paint, steel wool rubbing  
48 x 33 x 3/4 inches

ROOM EAST  
41 Orchard Street  
New York, NY 10002

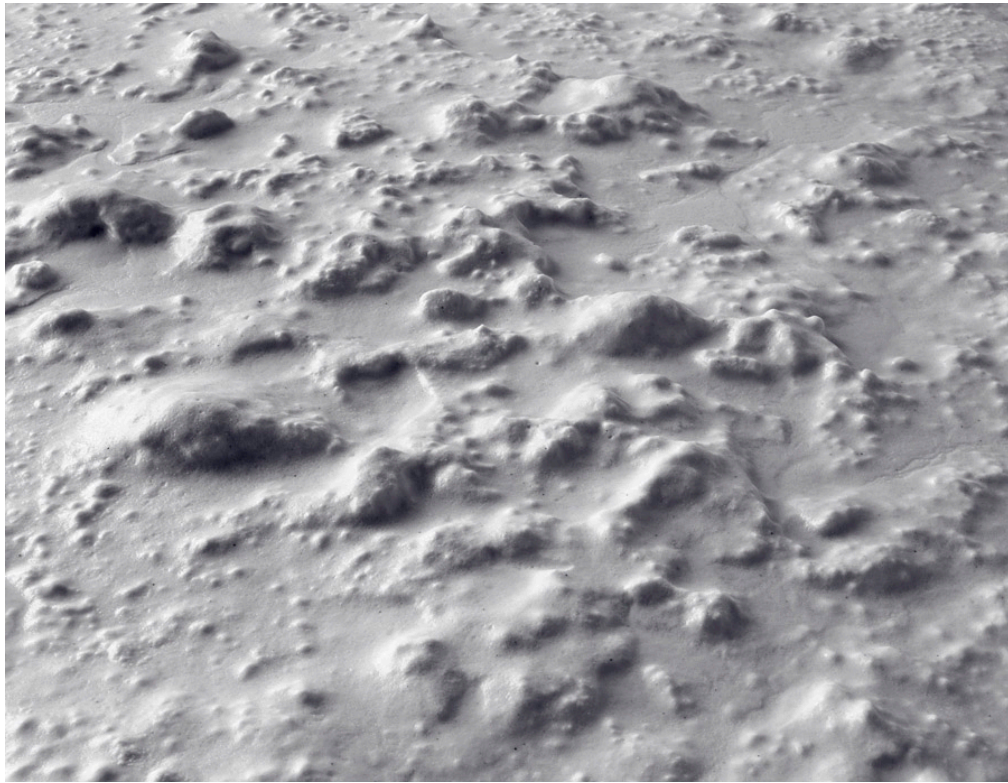
info@roomeast.com  
+1 212 226 7108  
roomeast.com



MATTHEW BOOTH  
The Big Toe 2010  
archival pigment print  
32 x 42 5/8 inches  
Ed. 5 + 2 A.P.

ROOM EAST  
41 Orchard Street  
New York, NY 10002

info@roomeast.com  
+1 212 226 7108  
roomeast.com



MATTHEW BOOTH  
Diatomaceous earth 2010  
archival pigment print  
24 3/4 x 32 inches  
Ed. 5 + 2 A.P.

ROOM EAST  
41 Orchard Street  
New York, NY 10002

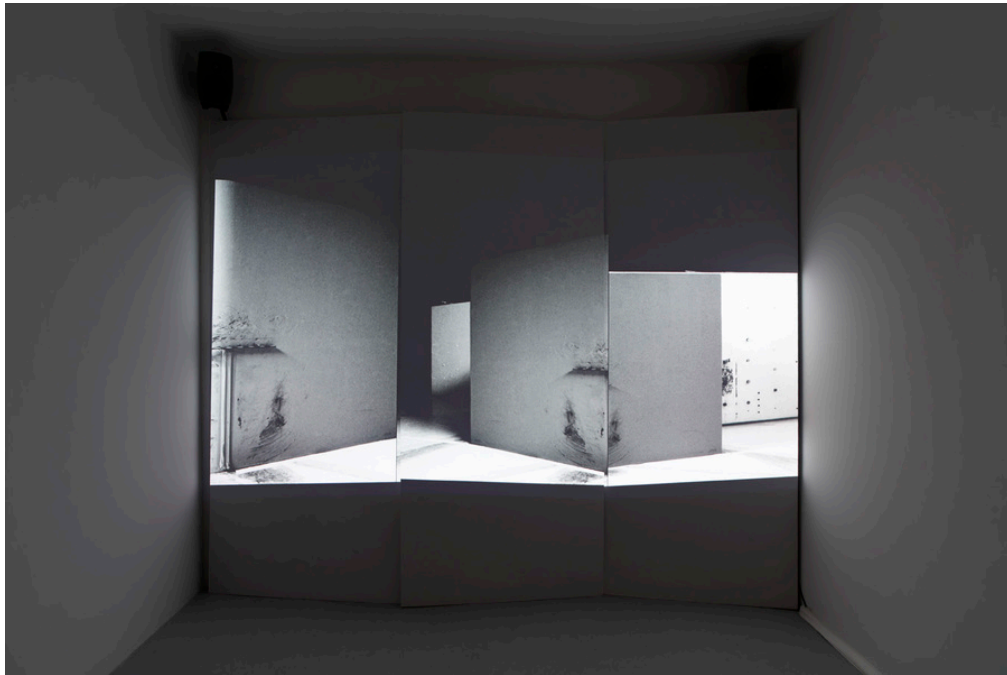
[info@roomeast.com](mailto:info@roomeast.com)  
+1 212 226 7108  
[roomeast.com](http://roomeast.com)



MAAIKE SCHOOREL  
Vanitas 2012-13  
oil on canvas  
16 x 34 inches

ROOM EAST  
41 Orchard Street  
New York, NY 10002

[info@roomeast.com](mailto:info@roomeast.com)  
+1 212 226 7108  
[roomeast.com](http://roomeast.com)



MARIA ANTELMAN  
The Amateurs 2012  
HD video, 8 minutes  
dimensions variable  
3 + 2 A.P.

ROOM EAST  
41 Orchard Street  
New York, NY 10002

[info@roomeast.com](mailto:info@roomeast.com)  
+1 212 226 7108  
[roomeast.com](http://roomeast.com)





MATTHEW BOOTH  
August 8, 2009 2011  
offset print  
18 x 24 inches

ROOM EAST  
41 Orchard Street  
New York, NY 10002

[info@roomeast.com](mailto:info@roomeast.com)  
+1 212 226 7108  
[roomeast.com](http://roomeast.com)



DAVINA SEMO  
HE SAID, I'M NOT GONNA STAY AROUND WHILE YOU CHANGE 2012

etched black mirror

36 x 36 inches

ROOM EAST  
41 Orchard Street  
New York, NY 10002

[info@roomeast.com](mailto:info@roomeast.com)  
+1 212 226 7108  
[roomeast.com](http://roomeast.com)



SHAWN KURUNERU  
Barbarian 2013  
ink on linen  
40 x 30 inches

ROOM EAST  
41 Orchard Street  
New York, NY 10002

[info@roomeast.com](mailto:info@roomeast.com)  
+1 212 226 7108  
[roomeast.com](http://roomeast.com)



AMY GRANAT  
oak knoll December #2 2011  
hand-processed black and white photograph  
~40.5 x 33 inches  
unique

ROOM EAST  
41 Orchard Street  
New York, NY 10002

info@roomeast.com  
+1 212 226 7108  
roomeast.com