

# R O E A

IBJECT

27 APRIL - 25 MAY

# O M S T

ROOM EAST will open its first exhibition of work by the Los Angeles-based artist Michael Rey on Sunday 27 April. The works on view combine humor and curiosity; the results of which range from subtle similarity to radical difference. "IBJECT," the title of the exhibition, is a neologism that refers to the artist's interest in a hybrid medium:

"Like sculptures, my works have three dimensions with a bodily presence. Like paintings, they have surfaces that function as compositional planes. They are hybrids. They can be thought of as existing in the interstices of painting and sculpture.

The wall works begin in my dreams and drawings. I lie in bed and doodle forms. I restrict myself from familiar shapes that are tethered to conventional meanings. My shapes are foreign, maybe alien. They emerge as something unrecognizable, and only later do I give them titles.

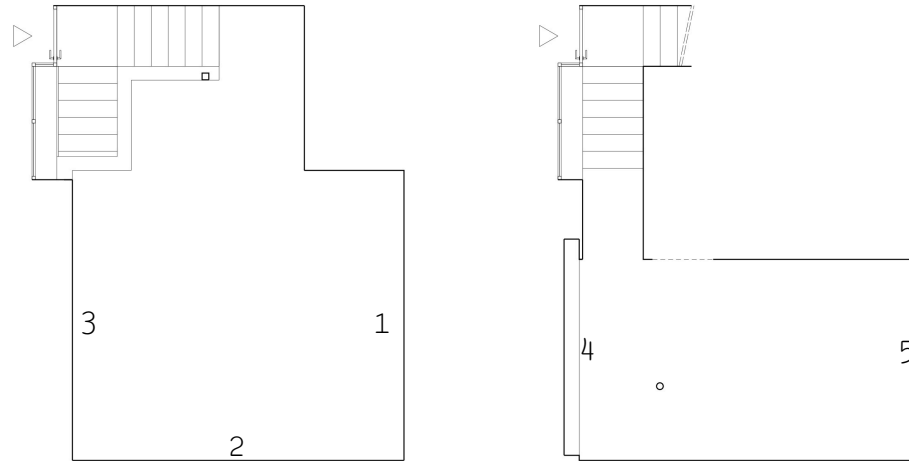
To make these forms, I work oil plasticine into the surfaces to create a ground. The choice of this material began as an experiment, but continues to reflect my personal anxieties about finitude. The fragile quality of the result is like skin, a delicate, vulnerable organ. The holes stand in as orifices, points, or measures of space.

I have a romantic notion that these works are autonomous, that they resist the pull of being defined by painting as it exists. Each shape and color combination is part of a visual lexicon, a succession of forms that push for a new language."

Michael Rey (b.1979) is a graduate of Art Center College of Design, Pasadena. Recent work was exhibited at Office Baroque, Brussels, and will be included in a forthcoming show at Ratio 3, San Francisco. This summer Rey will have a solo exhibition at Cherry and Martin, Los Angeles.

ROOM EAST  
41 Orchard Street  
New York, NY 10002

info@roomeast.com  
+1 212 226 7108  
roomeast.com

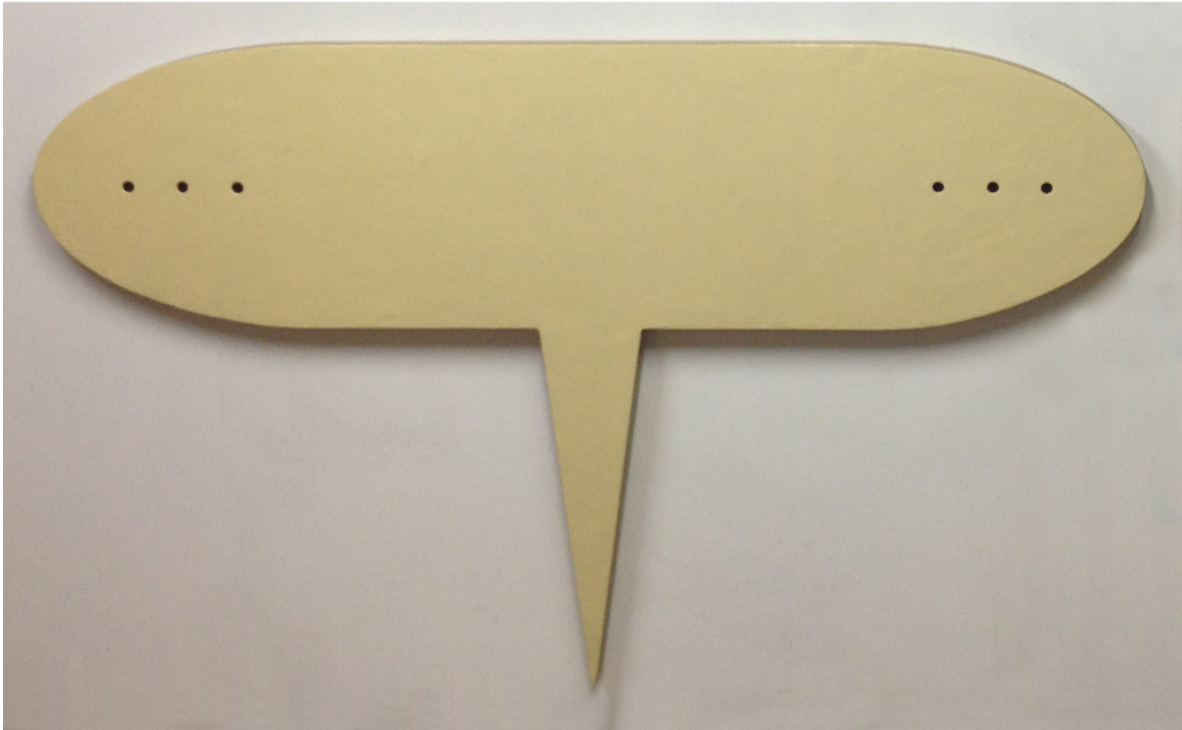


Upstairs:

- (1) Funng 2013  
oil on plasticine on panel  
74 x 22 inches  
MR1301
- (2) Picky Picky 2013  
oil on plasticine on panel  
13 x 89 inches  
MR1302
- (3) Lamb 2013  
oil on plasticine on panel  
59 x 27 inches  
MR1303

Downstairs:

- (4) Q\_Noise 2014  
oil on plasticine on panel  
37 x 62 inches  
MR1401
- (5) PRE 2014  
oil on plasticine on panel  
48 x 53 inches  
MR1402



MICHAEL REY  
Q noise 2014  
oil on plasticine on panel  
37 x 62 inches

ROOM EAST  
41 Orchard Street  
New York, NY 10002

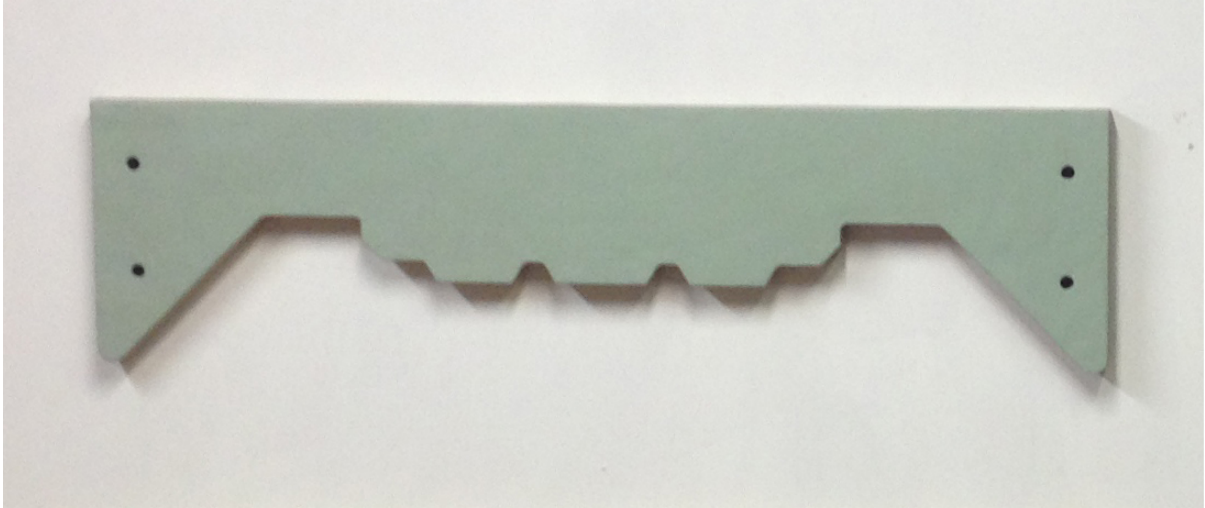
info@roomeast.com  
+1 212 226 7108  
roomeast.com



MICHAEL REY  
02 copy 2014  
oil on plasticine on panel  
58 x 23 inches

ROOM EAST  
41 Orchard Street  
New York, NY 10002

info@roomeast.com  
+1 212 226 7108  
roomeast.com



MICHAEL REY  
Ocelli 2013  
oil on plasticine on panel  
9.5 x 37 inches

ROOM EAST  
41 Orchard Street  
New York, NY 10002

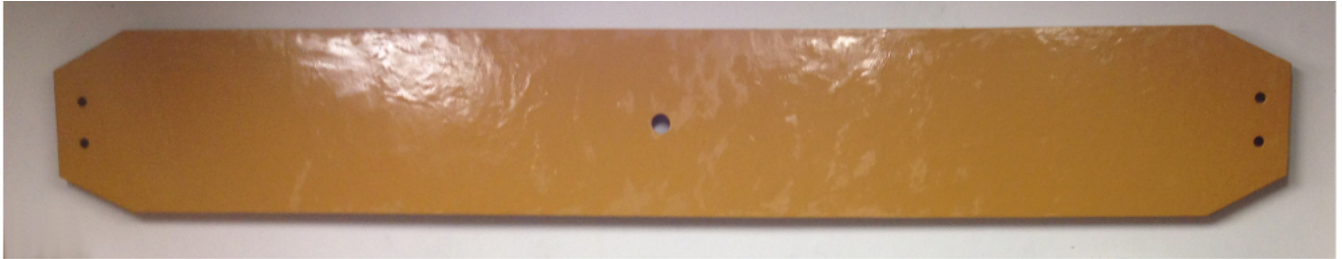
info@roomeast.com  
+1 212 226 7108  
roomeast.com



MICHAEL REY  
PRE 2014  
oil on plasticine on panel  
48 x 53 inches

ROOM EAST  
41 Orchard Street  
New York, NY 10002

[info@roomeast.com](mailto:info@roomeast.com)  
+1 212 226 7108  
[roomeast.com](http://roomeast.com)



MICHAEL REY  
Picky Picky 2013  
oil on plasticine on panel  
13 x 89 inches

ROOM EAST  
41 Orchard Street  
New York, NY 10002

info@roomeast.com  
+1 212 226 7108  
roomeast.com



MICHAEL REY  
Fung 2013  
oil on plasticine on panel  
74 x 22 inches

ROOM EAST  
41 Orchard Street  
New York, NY 10002

[info@roomeast.com](mailto:info@roomeast.com)  
+1 212 226 7108  
[roomeast.com](http://roomeast.com)





MICHAEL REY  
Lamb 2013  
oil on plasticine on panel  
59 x 27 inches

ROOM EAST  
41 Orchard Street  
New York, NY 10002

info@roomeast.com  
+1 212 226 7108  
roomeast.com