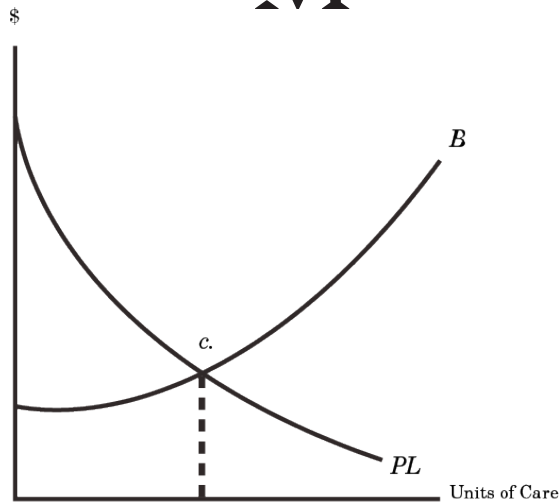


CALCULUS OF NEGLIGENCE

MARTE EKNÆS / SEAN RASPET

14 MAY - 24 JUNE 2015



- P** = Probability of Accident
B = Burden of Precautions
L = Gravity of Loss
c. = Economically Efficient Outcome: minimum expense
for precautions that carries an acceptable
level of risk

A logical calculus governs the space of accident. A variable built into the mismatching between layers—the chemical-biological, the infrastructural-architectural, the legal-financial.

An algorithm set inside a set of brackets to contain spillage. Industry and injury are necessary partners.

A laissez-faire accident can easily be accounted for. Perverse intentionality is more difficult and requires higher premiums. Terrorism, war and acts of God are in the same category for insurance purposes—exceptions beyond the scope of probability. Accidents beyond the accidental.

A functional mismatch, a hiccup in one layer can launch a cascade of events “downstream” like a slip n’ fall multiplied by medical malpractice and raised to the power of corporate malfeasance.

The atmosphere—the background of such events—is composed of the sum of its own quantum-thermal variations. Air in a black box.

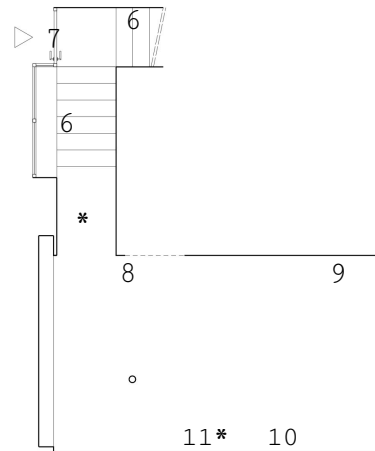
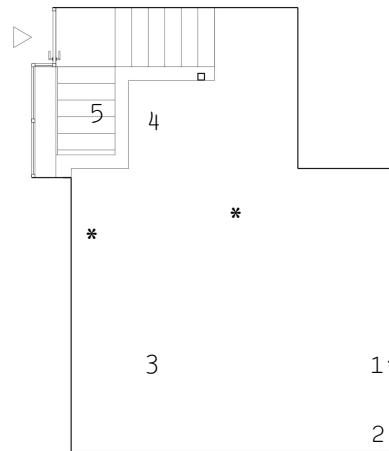
* Special thanks to Cecelia Weaver of DeWitt Stern Insurance and Risk Advisory, and to Melissa Lonesky at Praxair.

Marte Eknæs (b.1978, Norway) lives and works in Berlin. Past solo exhibitions include “Perpendicular Picture” at Susanne Hilberry Gallery, Detroit; “Arranged for Effect” at the Trondheim Kunstmuseum, Norway; “Escalate” at Between Bridges, London. Eknæs' work derives from the urban built environment, utilizing functional objects and appropriated strategies. Her exhibitions are often temporary site specific installations, integrating the architectural context into her work. Her book Formal Economy was released by Mousse Publishing this spring and her collaborative project Boom! with Nicolau Vergueiro is currently on view at Rise Projects, London.

Sean Raspet (b.1981, Washington, DC), lives and works in Los Angeles. Recent solo exhibitions include “Deformulation” at Societé, Berlin; a two-person exhibition at Chateau Shatto with Kelly Akashi; and “Residuals” at Jessica Silverman, San Francisco. Raspet’s practice engages the fluid materiality of industrial production and financial abstraction, often employing chemicals such as artificial flavorings and synthetic gases. His work has previously been exhibited in New York at ROOM EAST, The Artist’s Institute, and The Kitchen. He is the founder of Air-Variable, a scent fabrication company.

ROOM EAST
41 Orchard Street
New York, NY 10002

info@roomeast.com
+1 212 226 7108
roomeast.com



* = dispersed throughout the overall space of the gallery

Upstairs:

- (1) and *
SEAN RASPET
Atmospheric Reformulation (MediPure Air USP) 2015
pharmaceutical grade breathable air formulation
dimensions variable; flow rate: 100 mL/minute
(see technical specifications for additional documentation)
 - (2)
SEAN RASPET
Adjustment Residue (Accident Impact Trace) 2015
imprint on drywall of a hexagonal nut cover to an SMC AR-2000 regulator; broken regulator and parts
dimensions variable; approx. nut size: 1 inch diameter x 0.25 depth
(see technical specifications for additional documentation)
 - (3)
MARTE EKNÆS
Ventilation IV 2015
ventilation screen
3 x 12 x 12 inches
 - (4)
MARTE EKNÆS
Ventilation I 2015
ventilation screen
6 x 6 inches
 - (5)
MARTE EKNÆS
Ventilation II 2015
ventilation screen
19.5 x 19.5 inches
- Downstairs:
- (6)
MARTE EKNÆS
Better Furnished, More Fortunate V 2015
nylon brush strips, aluminum channels
2* parts, each 1 x 72 x 2.25 inches
 - (7)
MARTE EKNÆS
Anti-slip VIII 2015
anti-slip tape
10 parts, each 5.5 x 5.5 inches
 - (8)
MARTE EKNÆS
Disposal (iTouchless) 2015
automatic trash can
27 x 12 x 10.5 inches

- (9)
MARTE EKNÆS
Ventilation III 2015
ventilation screen
19.5 x 19.5 inches
- (10) and *
SEAN RASPET
Atmospheric Reformulation (Praxair ExtendaPak EX 49) 2015
food packaging modified atmosphere gas; mixture of carbon dioxide, oxygen and nitrogen
dimensions variable; flow rate: 100 mL/minute
(see technical specifications for additional documentation)
- (11) and *
SEAN RASPET
Atmospheric Reformulation (Zero Air) 2015
purified (<0.01 ppm hydrocarbons/VOCs) air formulation for environmental and emissions testing
dimensions variable; flow rate: 100 mL/minute
(see technical specifications for additional documentation)

Dispersed:

- *
SEAN RASPET
Layer Adjustment (Accident Probability Adjustment) 2015
Alterations made to the physical location to increase the probability of an accident while remaining within the scope of existing insurance coverage/assessment
Duration: May 5th – June 21st. 2105
- *
SEAN RASPET
Layer Adjustment (Terrorism Coverage Insurance Layer) 2015
An additional layer of insurance for terrorism and catastrophic events
Duration: May 5th – June 21st. 2105
(see technical specifications and insurance documents for additional documentation)
- *
SEAN RASPET
Atmospheric Reformulation (Oxygen 18 Isotope) 2015
Oxygen 18 isotope (oxygen gas with atoms containing two neutrons more than the common Oxygen-16 isotope)
Flow rate: 500 mL total dispersed at beginning of exhibition
(see technical specifications for additional documentation)